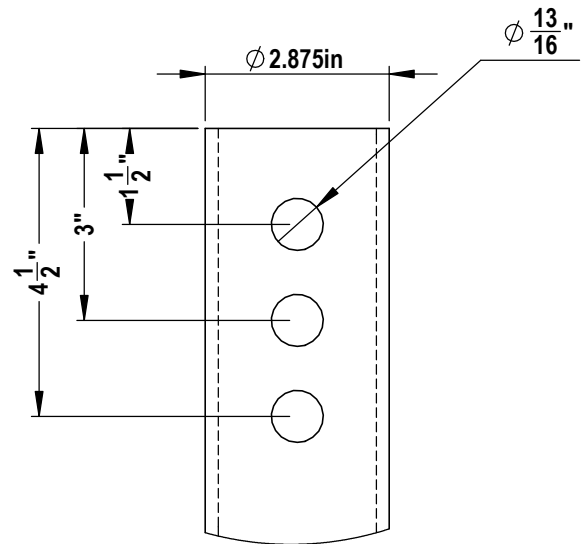
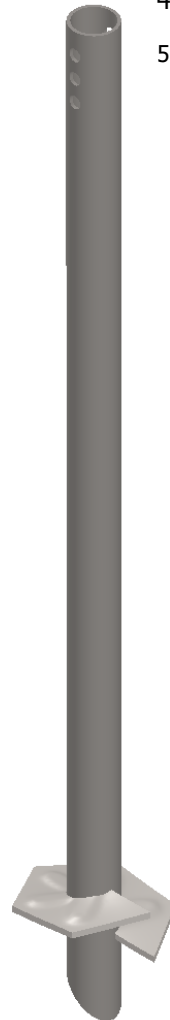
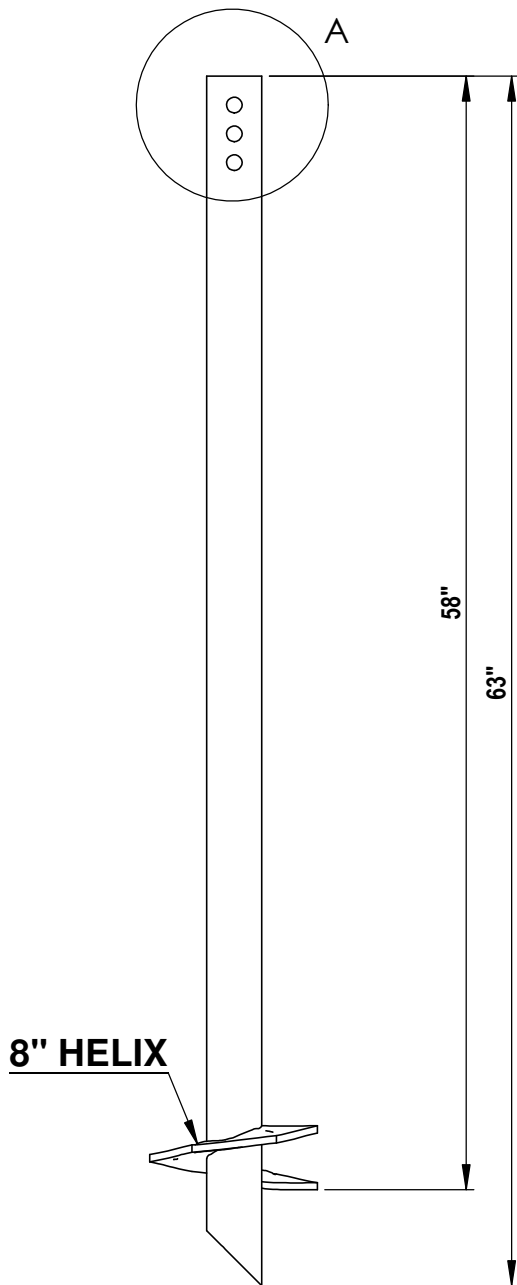
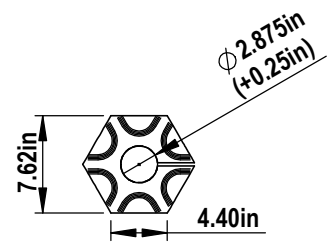


**NOTES:**

1. SHAFT: ROUND STRUCTURAL ERW TUBING PER ASTM A500 GR B, 2.50" SCH40. MINIMUM YIELD 50 KSI, MINIMUM TENSILE STRENGTH 65 KSI AND MINIMUM ELONGATION 23 PERCENT.
2. TORQUE STRENGTH RATING = 6,000 FT-LB
3. LOAD TO TORQUE RATIO (KT) = 9
4. USE THREE 3/4" A307 GR A BOLTS TO ATTACH TO AN EXTENSION.
5. AVAILABLE NOMINAL LENGTHS ARE 2', 5', 7' AND 10.5'



**A** DETAIL A  
N.T.S.



**1** 2.5" SCH40 SINGLE HELIX  
1:10

**2** 8" HELIX  
N.T.S.

CANTSINK MANUFACTURING, INC.



71 First Avenue, N.W.  
Lilburn, Georgia 30047  
678-280-PILE(7453)  
FAX:678-280-3476

Title: CANTSINK HELICAL PILE LEAD

Catalog No. 2.5-40L05-8

Revision: RV-12-3/2/2020

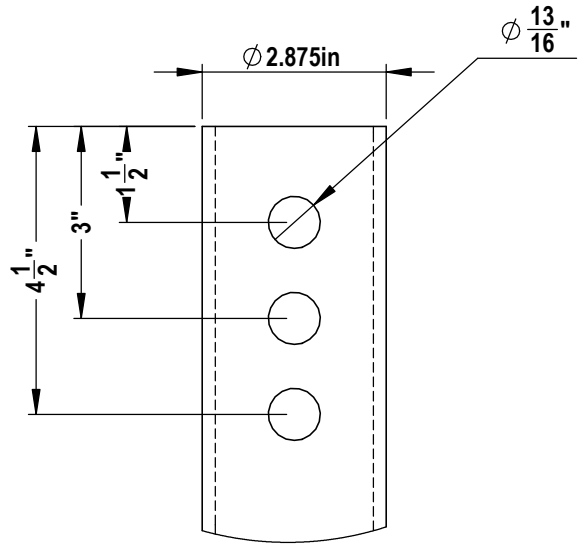
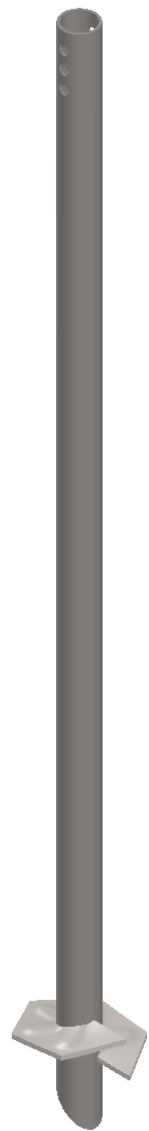
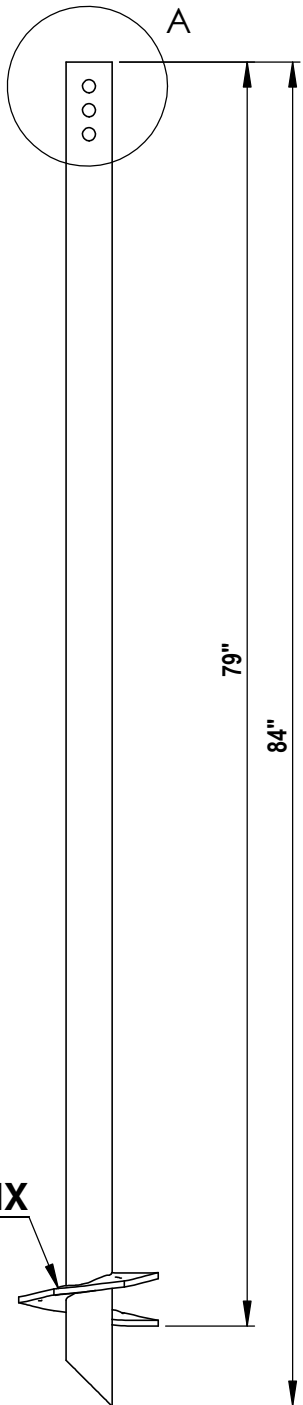
Scale: N.T.S.

Drawn by: LXSS

Sheet: 1/1

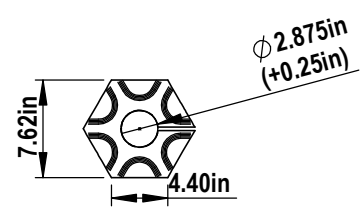
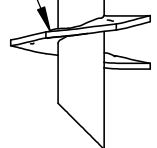
**NOTES:**

1. SHAFT: ROUND STRUCTURAL ERW TUBING PER ASTM A500 GR B, 2.5" SCH40. MINIMUM YIELD 50 KSI, MINIMUM TENSILE STRENGTH 65 KSI AND MINIMUM ELONGATION 23 PERCENT.
2. TORQUE STRENGTH RATING = 6,000 FT-LB
3. LOAD TO TORQUE RATIO (KT) = 9
4. USE THREE 3/4" A307 GR A BOLTS TO ATTACH TO AN EXTENSION.
5. AVAILABLE NOMINAL LENGTHS ARE 2', 5', 7' AND 10.5'



**A** DETAIL A  
N.T.S.

**8" HELIX**



**1** 2.5" SCH40 SINGLE HELIX  
1" = 1' 0"

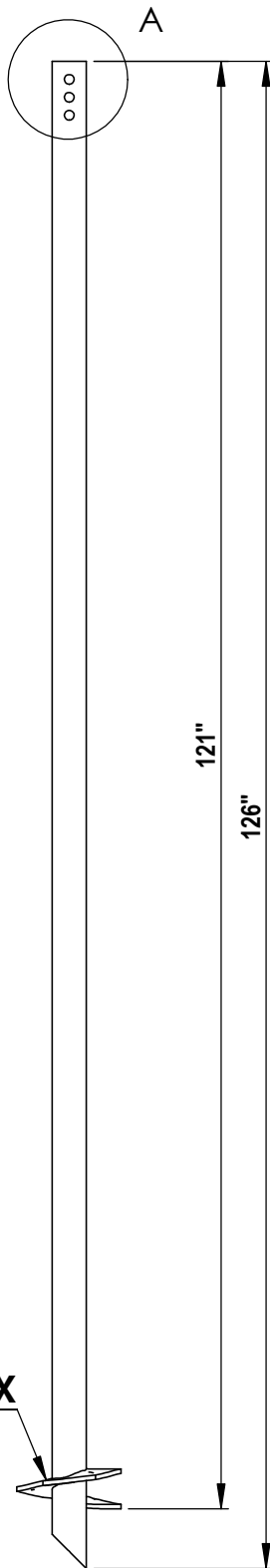
**2** 8" HELIX  
N.T.S.

CANTSINK MANUFACTURING, INC.



71 First Avenue, N.W.  
Lilburn, Georgia 30047  
678-280-PILE(7453)  
FAX:678-280-3476

Title: CANTSINK HELICAL PILE LEAD		Catalog No. 2.5-40L07-8	
Revision: RV-12-3/2/2020	Scale: N.T.S.	Drawn by: LXSS	Sheet: 1/1

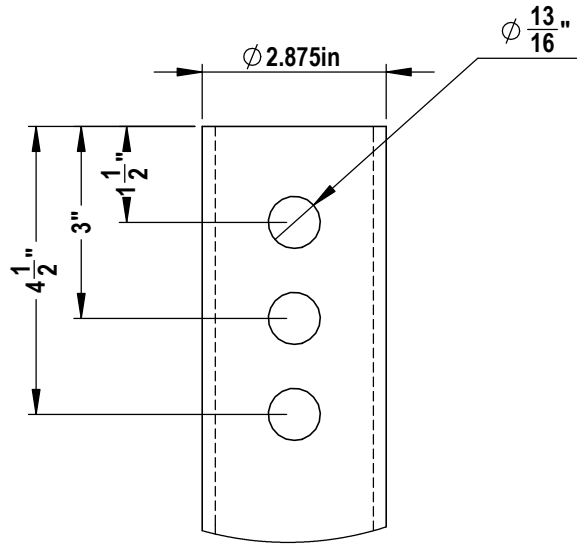
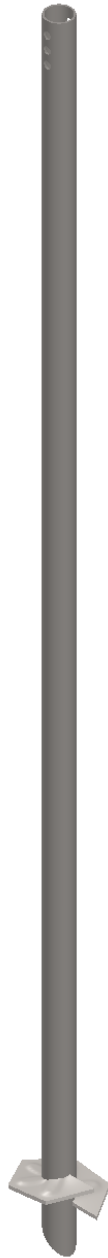


**8" HELIX**

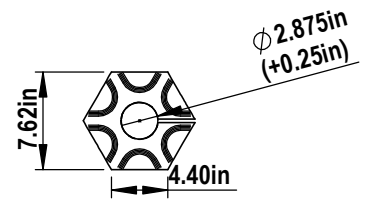
**1 2.5" SCH40 SINGLE HELIX**  
 $\frac{3}{4}" = 1' 0"$

**NOTES:**

1. SHAFT: ROUND STRUCTURAL ERW TUBING PER ASTM A500 GR B, 2.50" SCH40. MINIMUM YIELD 50 KSI, MINIMUM TENSILE STRENGTH 65 KSI AND MINIMUM ELONGATION 23 PERCENT.
2. TORQUE STRENGTH RATING = 6,000 FT-LB
3. LOAD TO TORQUE RATIO (KT) = 9
4. USE THREE  $\frac{3}{4}"$  A307 GR A BOLTS TO ATTACH TO AN EXTENSION.
5. AVAILABLE NOMINAL LENGTHS ARE 2', 5', 7' AND 10.5'



**A** **DETAIL A**  
 N.T.S.



**2** **8" HELIX**  
 N.T.S.

CANTSINK MANUFACTURING, INC.



71 First Avenue, N.W.  
 Lilburn, Georgia 30047  
 678-280-PILE(7453)  
 FAX:678-280-3476

Title: CANTSINK HELICAL PILE LEAD

Catalog No. 2.5-40L10-8

Revision: RV-12-3/2/2020

Scale: N.T.S.

Drawn by: LXSS

Sheet: 1/1