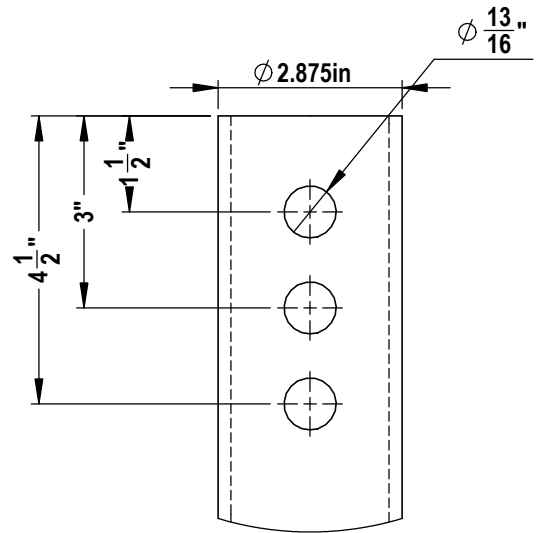
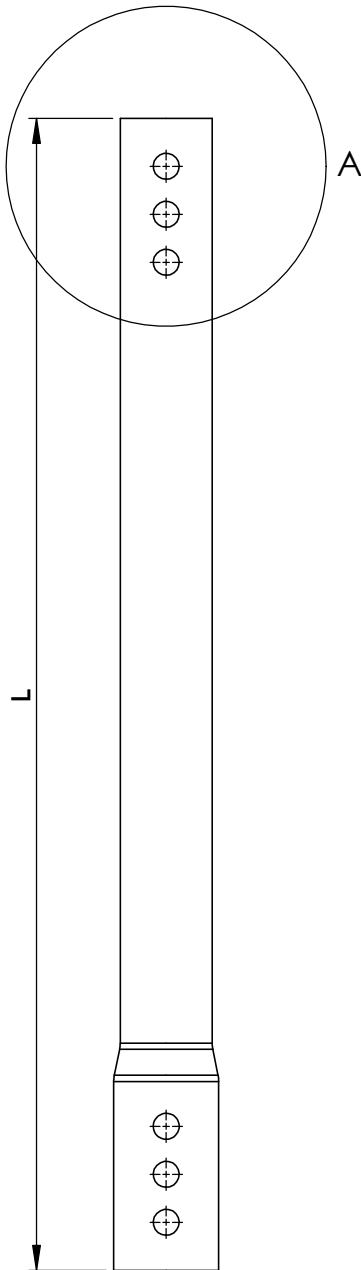


NOTES:

1. SHAFT: ROUND STRUCTURAL ERW TUBING PER ASTM A500 GR B, 2.50" SCH40. MINIMUM YIELD 50 KSI, MINIMUM TENSILE STRENGTH 65 KSI AND MINIMUM ELONGATION 23 PERCENT.
2. TORQUE STRENGTH RATING = 6,000 FT-LB
3. LOAD TO TORQUE RATIO (KT) = 9
4. USE THREE 3/4" A307 GR A BOLTS TO ATTACH TO AN EXTENSION.
5. AVAILABLE NOMINAL LENGTHS: 2', 3', 4', 5', 7' AND 10.5'



A **DETAIL A**
1:3

1 **2.5" SCH40 Extension**
2" = 1'-0"

CATALOG NUMBER	L (in)
2.5-40X02	24
2.5-40X03	36
2.5-40X04	48
2.5-40X05	60
2.5-40X07	84
2.5-40X10	126

CANTSINK MANUFACTURING, INC.



71 First Avenue, N.W.
Lilburn, Georgia 30047
678-280-PILE(7453)
FAX:678-280-3476

Title: CANTSINK HELICAL PILE EXTENSION

Catalog No. 2.5-40X

Revision: RV-12-3/4/2020

Scale: N.T.S.

Drawn by: LXSS

Sheet: 1/1